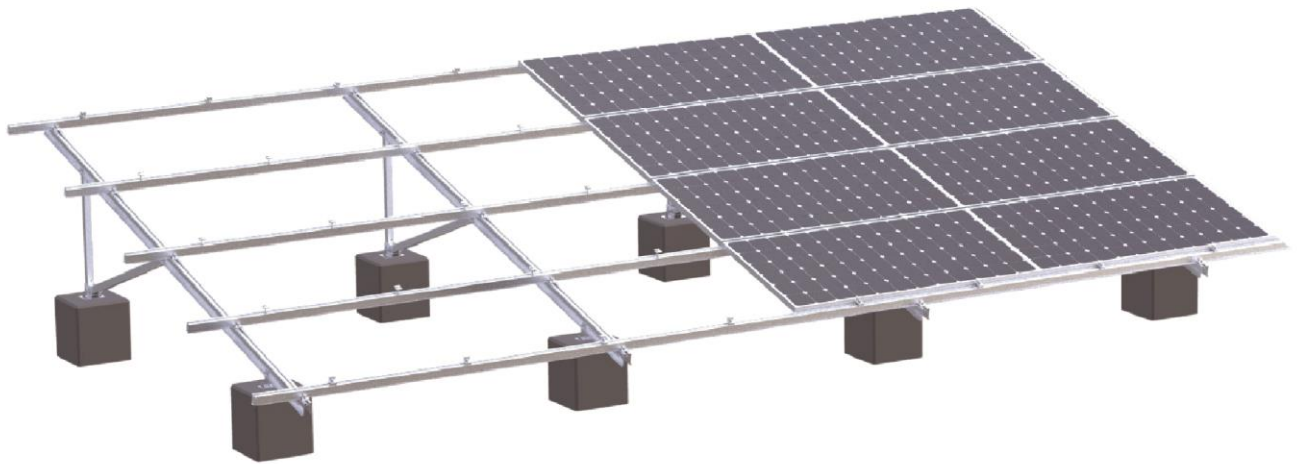


# Aluminum Ground Mounting System V-AG·V

Designed for projects with low wind & snow loads

Use bolt connection instead of H connector for easier installation

New T-nuts design to enable panel installation by one person and save the labor cost



\*Front-leg-free solution recommended for ground clearance less than 500mm.

## Specifications

---

Tilt Angle: 0°-45°

Wind Load: 35m/s

Snow Load: 0.5KN/m<sup>2</sup>

Material: AL6005-T5/SUS304



GM-BS-50-B02



GM-BR-01-SS



GM-R76-S



GM-ECQ-30



GM-MCQ-30



GM-AG6-S