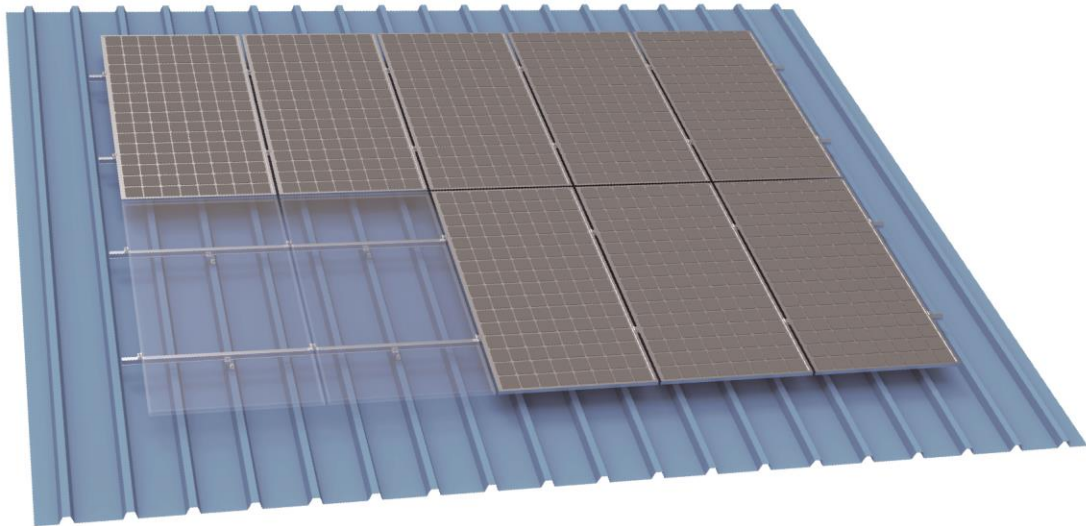


Roof Mounting System-Track with C Clamp-CT

The new rail structure features a closed section design, making it lighter and stronger
The new block design is easier to install | Suitable for both commercial and residential roofs



Specifications

Mounting Angle: Flush

Roof Angle: 0°-30°

Roof Type: Tin and Tile roof

Material: AL6005-T5/SUS304



GM-BR-CT



GM-CTH-04-03



GM-EC-C35



GM-EC-MTY



GM-MRH-05-OZ



GM-MRH-18-OZ



GM-MRH-19-OZ



GM-MRH-24-OZ



GM-MRH-ZF



GM-R-CT45



GM-RS-CT45